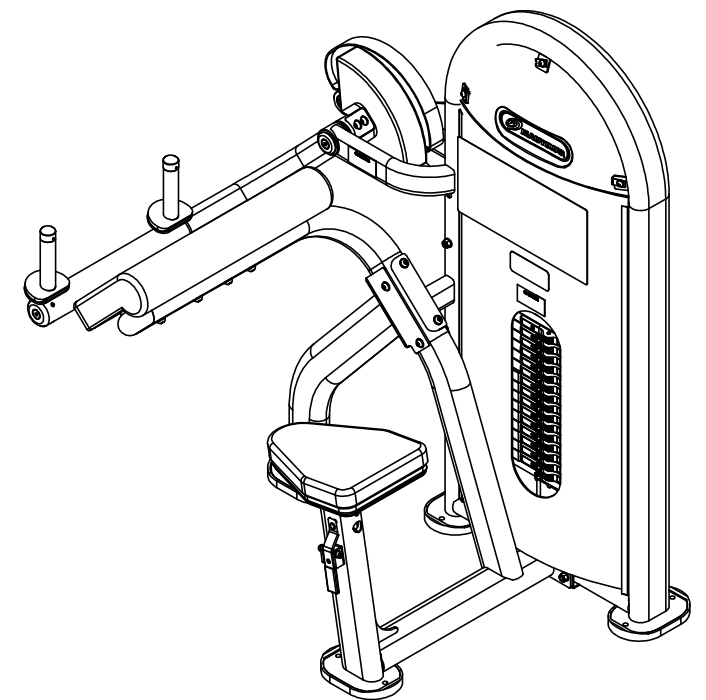
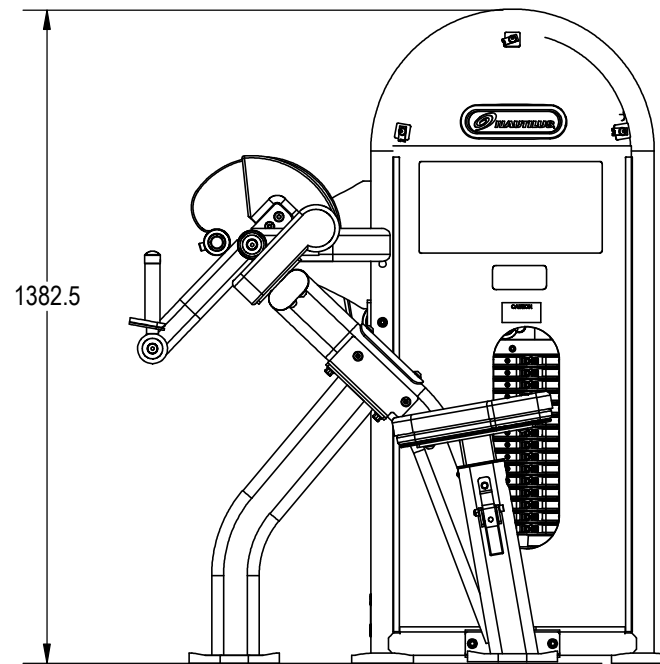
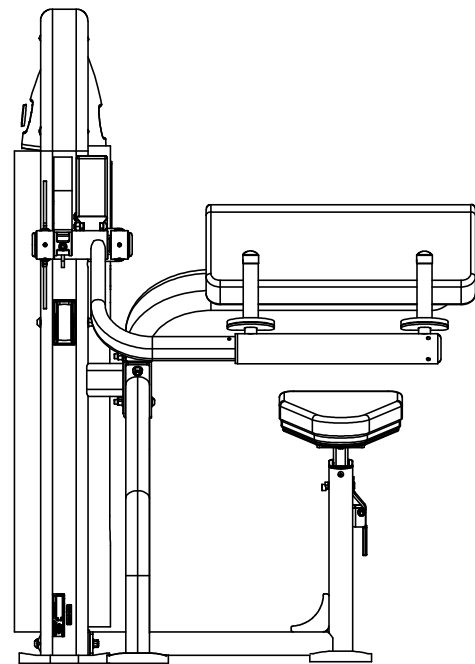
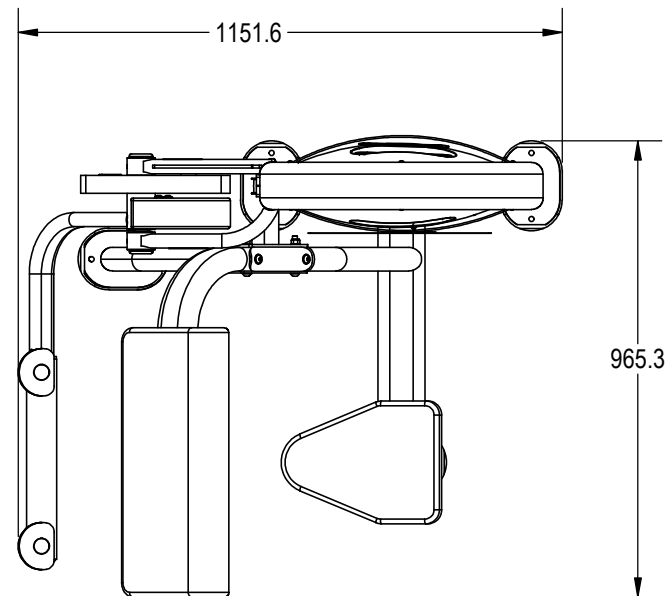


NOTES:

1. ASSEMBLE AND INSPECT PER SOP 620-7918..
2. INSTALL Kg STICKER AND AFFIX Lb STICKER TO INSIDE OF SHROUD WITH TAPE.
3. COLOR DICTATED BY THE SALES ORDER. REFERENCE THE MACHINES BOM FOR COMPONENTS CONTAINING -XX, -00XX AND -XXXX.
 - a. COLOR: -XX COLOR DESIGNATOR AS SPECIFIED IN SOP 620-8222.
 - b. THE -XX CAN RESULT IN ONE COLOR FOR THE METAL SHROUD AND A DIFFERENT COLOR FOR THE METAL FRAME ALSO WITH A -XX LISTED ON THE BOM.
 - c. THE -00XX IS THE COLOR DESIGNATOR FOR UPHOLSTERY.
 - d. THE 5TH DESIGNATOR: "X" WITHIN -XXXXX DEFINES THE HEAD STRAP OR CUSTOM PRODUCTS BRAND. THIS IS SPECIFIED ON SALES ORDERS.
 - e. THE -XXXXX IS CREATED BY COMBINING THE -XX, -00XX AND THE 5TH DESIGNATOR.
 - f. ALL X'S SHOULD BE DEFINED ON THE SALES ORDER.

REVISIONS HISTORY				
REV.	DATE	DESCRIPTION	ECO	BY
A	8/5/2016	INITIAL RELEASE	15482	AM



DOCUMENT STATUS:

NOTICE OF PROPRIETARY INFORMATION

THIS DOCUMENT SHALL NOT BE REPRODUCED NOR SHALL THE INFORMATION CONTAINED HEREIN BE USED BY OR DISCLOSED TO OTHER EXCEPT AS EXPRESSLY AUTHORIZED BY CORE HEALTH & FITNESS, LLC.

CLASS OF WORK	UNLESS OTHERWISE SPECIFIED DIMS ARE IN mm. TOLERANCES FOR MEASURE OF LENGTH ARE:							ANGLES = ±2°		
	0.5 to 3	> 3 to 6	> 6 to 30	> 30 to 120	> 120 to 400	> 400 to 1000	> 1000 to 2000	> 2000		
FINE	±0.05	±0.05	±0.1	±0.15	±0.2	±0.3	±0.5	----		
MEDIUM X	±0.1	±0.1	±0.2	±0.3	±0.5	±0.8	±1.2	±2		
COARSE	±0.2	±0.3	±0.5	±0.8	±1.2	±2	±3	±4		
VERY COARSE	----	±0.5	±1	±1.5	±2.5	±4	±6	±8		

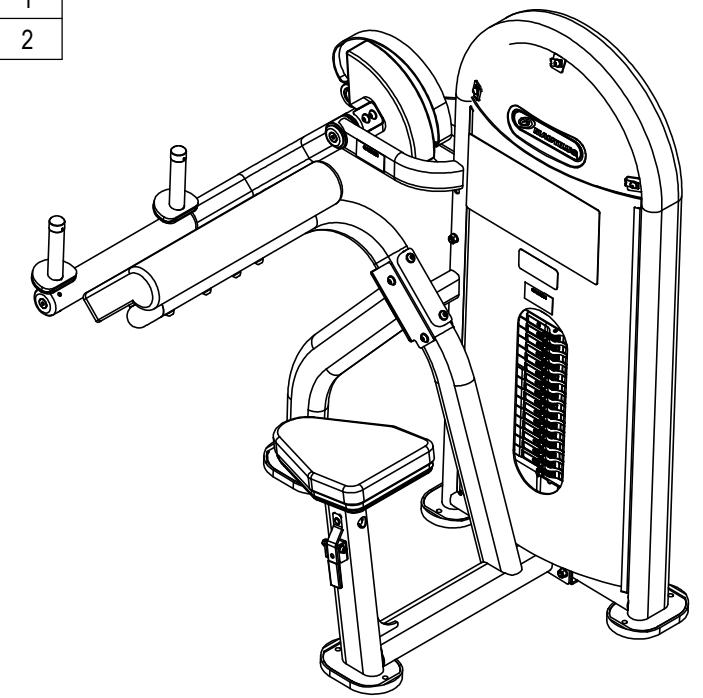
MATERIAL SEE BOM	
FINISH SEE NOTES	
VENDOR: N/A	P/N: N/A

THIRD ANGLE PROJECTION		
DRAWN	INITIAL AM	DATE 8/5/16
CHECKED		
APPROVED		
	U.O.M.	MM

CORE HEALTH & FITNESS, LLC 4400 NE 77th Ave., Suite 300 Vancouver, WA 98662		
CORE PART NO	REV	
NL-S5110-29AGS	A	
TITLE NL,SSS,TRICEPS EXTENSION,LNL		
SCALE: 1:10	SHEET 1 OF 3	SHEET SIZE: B

9		8		7		6		5		4		3		2		1	
ITEM NO.		PART NUMBER		DESCRIPTION		QTY.		ITEM NO.		PART NUMBER		DESCRIPTION		QTY.			
J	1	050-5457	Label, S/N, Non-Powered, Primary, Core H&F	1				45	730-1118	SCREW, M10, BHC, HK, SS	2			J			
	2	730-0194	PAD,SEAT,IN-B7201	1				46	730-1119	SCREW, M10x35, BH, SS	2						
	3	730-0216	PAD,FOOT,FRAME,WELDED	4				47	730-1122	SCREW,M10X63,BHC,SS	4						
	4	730-0223	CAP, LARGE, FRAME	1				48	730-1125	SCREW,M10X90,BHC,SS	4						
I	5	730-0232	PAD,ARM REST,IN-S5100	1				49	730-1138	SCREW,M8X20,BHC,SS	6						
	6	730-0233	SHROUD,REAR,IN-S5100	1				50	730-1155	SCREW, 10-32X3.2, SET	4						
	7	730-0236	PIN, BELT ANCHOR	2				51	730-1159	BUMPER, IN-S5110	2						
	8	730-0237	SCREW, M10x30, SHS,SS	2				52	730-1257	HANDLE,RUBBER,GRIP,SLEEVE	2						
H	9	730-0385	LABEL,CAUTION,PINCH POINT	3				53	730-1285	ASSY, ARM, BL-S5110	1						
	10	730-0548	COUNTERBALANCE, IN-S5110	1				54	730-1335	SHROUD,LNL,S5100	1						
	11	730-0565	CAP, END, HANDLE	2				55	730-1399	WSA-LNL,180LB,15H	1						
	12	730-0656	CAP,50MM OD	2				56	730-1448	BUMPER, STACK, 25.4MM	2						
	13	730-0702	SHROUD,UPPER	2				57	730-1482	ASSY, ROTATING ARM, S5110	1						
G	14	730-0704	CAP, 25MM, ALUMINUM	2				58	730-1491	LABEL,INSTRUCTIONS,LOCK N LOAD	1						
	15	730-0721	PULLEY, 75MM	3				59	730-1544	WASHER, BICEP/TRICEP, KEYED, LOCK, 7.2MM THICK	1						
	16	730-0778	BELT, 15.5 FT LONG	1				60	730-1545	WASHER, BICP/TRICEP, KEYED, FLAT, 7.2MM THICK	1						
	17	730-0845	SHROUD,MOUNTING,U-STYLE,CLIP	6				61	730-7232-XXX	STICKER, PLACARD, INSTRUCTION, LLTE, NAUT.	1						
	18	730-0858	BUSHING, 1.0, BRONZE	2				62	731-0335	STICKER, MADE IN CHINA, IP	1						
F	19	730-0870	SCREW,M10X25,FHM,HK,SS	3				63	731-7311	STICKER,NAUTILUS,DECO,45MMX191MM	2						
	20	730-0885	NUT,M6,JAM,HEX,SS	2													
	21	730-0886	BALL BEARING,25MM ID, 47MM OD	2													
	22	730-0891	SCREW, M8X30, SHS,SS	1													
	23	730-0892	SCREW,M8X55,SHS,SS	1													
E	24	730-0896	SCREW,M8X16,SET,SS	4													
	25	730-0899	SCREW,M6X12,BHC,SS	2													
	26	730-0908	WASHER,M10,FLAT,SS	30													
	27	730-0910	WASHER,M8,BELLEVILLE,SS	8													
	28	730-0911	ADJUSTMENT,HANDLE,COMPRESSION SPING	1													
D	29	730-0930	ASSY,EXTENSION,ADJUSTMENT,HANDLE	1													
	30	730-0935	ASSY,ADJUSTMENT,HANDLE,END,SLEEVE	1													
	31	730-0936	ASSY,TUBE,INSERT,SLEEVE	2													
	32	730-1075	WEIGHT STACK,FRAME	1													
C	33	730-1078	WEIGHT STACK,GUIDE RAIL	2													
	34	730-1081	ASSY,MAIN FRAME	1													
	35	730-1082	ASSY,MAIN FRAME,LEG	1													
	36	730-1083	POST,ADJUSTMENT,EXTENSION,SEAT	1													
	37	730-1084	SHAFT, 25MM X 192	1													
B	38	730-1085	CAP, END TUBE, S5110	1													
	39	730-1087	PAD,RUBBER,BUMPER,M47X68	1													
	40	730-1103	NUT,M8,NYLON PATCH,SS	1													
	41	730-1104	NUT,M10,NYLON PATCH,SS	11													
	42	730-1109	SCREW,M10X80,BH,SS	2													
	43	730-1110	SCREW,M10X115,BHC,SS	1													
A	44	730-1112	SCREW, M10x130, BH, SS	4													

REPLACEMENTS				
Item	StartTrac p/n	Description	Inray p/n	Qty
3	730-0223	CAP,LARGE,FRAME	L1-5000	1
2	730-0216	PAD,FOOT,FRAME,WELDED	IN-B75030900	4
4	730-0232	PAD,ARM REST,IN-S5100	IN-S51102600	1
1	730-0194	PAD,SEAT,IN-B7201	IN-B72012000	1
5	730-0233	SHROUD,REAR,IN-S5100	IN-S10121500	1
55	730-1335	SHROUD,LNL,S510	730-1335	1
			IN-D10132800	1
14	730-0228	KIT, UPPER SHROUD	PNLM8*20A2-70	3
			GB958A2-70	3
			IN-B72011700	2
32	730-0213	KIT, SEAT SLEEVE, IN-B7502	GB41M6A2-70	2
			GB818M6*12A2-70	2
			IN-B72010600	1
			IN-B72011400	1
			HF1642303	1
			GB70M8*55A2-70	1
30	730-0251	KIT ADJUSTMENT HANDLE, IN-D1014	GB958A2-70	2
			IN-B72001200	1
			YZGB7710-32*3.2DS2	2
15	730-0151	ASSY ENDCAP, 25.4MM, ALUM	SLEEVE RUBBER	2 FT
			IN-S21002800	15.5 FT
			IN-S10121700	2
17	730-0215	KIT, BELT REPLACEMENT	GB70M10*30A2-70	1
N/A	730-0189	KIT, HARDWARE, IN-S5110	N/A	n/a

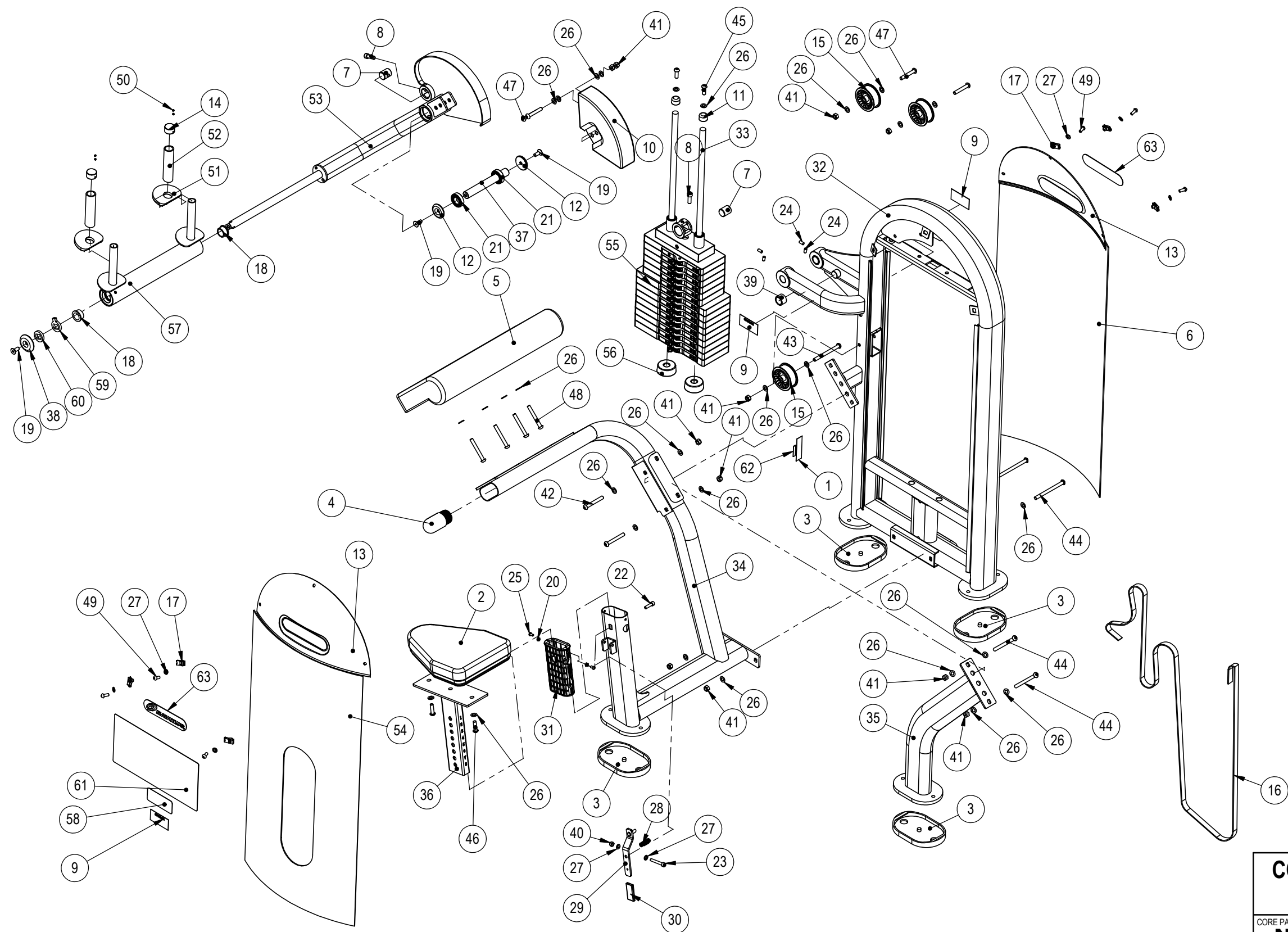


CORE HEALTH & FITNESS, LLC
 4400 NE 77th Ave., Suite 300
 Vancouver, WA 98662

CORE PART NO: **NL-S5110-29AGS** REV: **A**

TITLE: **NL,SSS,TRICEPS EXTENSION,LNL**

SCALE: 1:10 | SHEET 2 OF 3 | SHEET SIZE: B



CORE HEALTH & FITNESS, LLC		
4400 NE 77th Ave., Suite 300 Vancouver, WA 98662		
CORE PART NO	REV	
NL-S5110-29AGS	A	
TITLE		
NL,SSS,TRICEPS EXTENSION,LNL		
SCALE: 1:10	SHEET 3 OF 3	SHEET SIZE: B